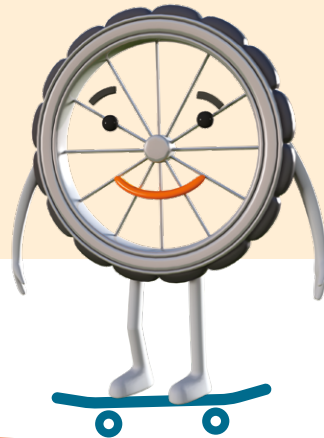


TRAVEL

let's get started

Why how we travel matters



Hello, I'm Wheel and I'm a pedal power pro!

Travel and traffic is **Wheel's** expertise. A bit of a thrill seeker, Wheel knows everything about anything that moves. A great one for coming up with ideas.

Cars and buses use fossil fuel which contributes to climate change - something that's threatening people and animals throughout the world.



The past 50 years have seen a travel revolution – we can go further, faster and have more independence than ever before.

However that's come at a cost to our environment. In 2013, transport was the source of a quarter of our total CO2 emissions in the UK with over 70% of commuting trips being made by car. In 2012, nearly half of us took an international flight. We walk and cycle less and less.

The choices we make about travelling – to work, school, our meeting place and on holiday – affect climate change. Developed countries such as the UK need to show the world how low-carbon travel can work, both through new technology and by using energy-guzzling forms of transport less.

Your group can make a difference



Demonstrating good practice at your group's meetings is an easy first step to highlight the importance of thinking about the impact travel has.

Group leaders could lead by example and adopt an alternative way of travelling – perhaps by bicycle, foot or car share.



Ask your members parents and guardians to fill in the **Footprint Calculator** with their children and share the results with the group.

The online footprint calculator is more suitable for children to do with an adult as they're not able to make decisions about some of the questions asked.

Organise a workshop for those with bicycles to learn how to maintain them properly.

Organise a fundraiser to raise awareness about transport – sponsored walks and cycles can also raise your group some money or for environmental charities such as WWF!



Get ready... Go!



Sign up for our Green Ambassadors badge scheme, which encourages young people to connect with environmental issues and gives youth leaders some great activities and resources. Simply complete five activities from any one theme, including at least one activity from each stage and your group members will each earn a badge.

Register your group here -

<https://wwfyouthscheme.education.co.uk/>

Find out more



www.foe.co.uk/sites/default/files/downloads/transport.pdf

Friends of the Earth's booklet about sustainable transport is packed with statistics, tips and explanations.

<http://footprint.wwf.org.uk>

Our footprint calculator shows how transport choice can affect climate change.

www.ecofriendlykids.co.uk/transportairpollution.html

Lots of helpful information about what causes air pollution and how we can reduce it.

www.sustrans.org.uk

Sustrans is a charity helping people to make more journeys on bike, foot and public transport. Their site is packed with information and maps as well as hints and tips to use the car less.

www.sustrans.org.uk/sites/default/files/file_content_type/get-going-mcheck-web.pdf

A very handy safety and maintenance checklist for bikes.



Now get their attention

Did you know...?



© GLOBAL WARMING IMAGES / WWF

In 2012, there were 34.6 million vehicles on the UK's roads – 28.7 million of these were cars. There were 40% more cars on the UK's roads then than there were in 1994.



© GLOBAL WARMING IMAGES / WWF

In 2016, over 75 million passengers travelled through Heathrow airport – the highest number on record.



© GLOBAL WARMING IMAGES / WWF

In 2012 in the UK, only 2% of all trips were made by bicycle, and nearly 70% of people in the UK never, or very rarely, ride a bike.



For a future where people and nature thrive | wwf.org.uk

© 1986 panda symbol and ® "WWF" Registered Trademark of WWF. WWF-UK registered charity (1081247) and in Scotland (SC039593). A company limited by guarantee (4016725)